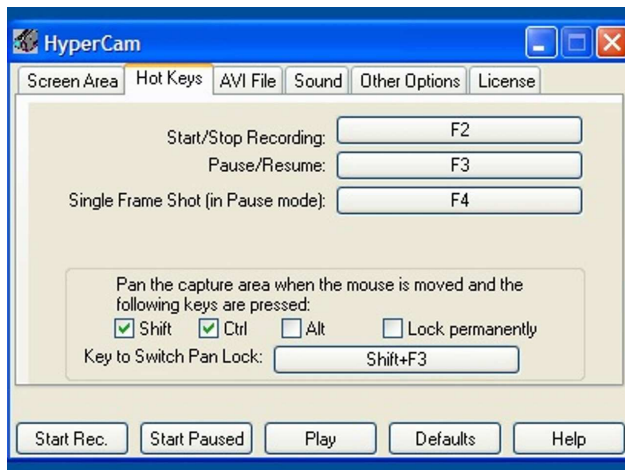
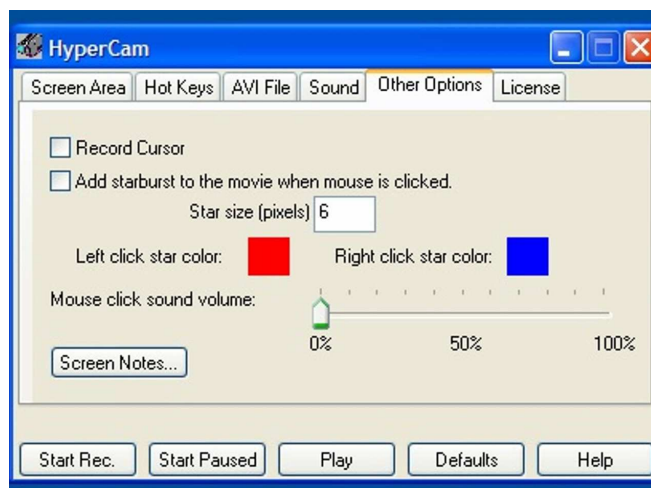
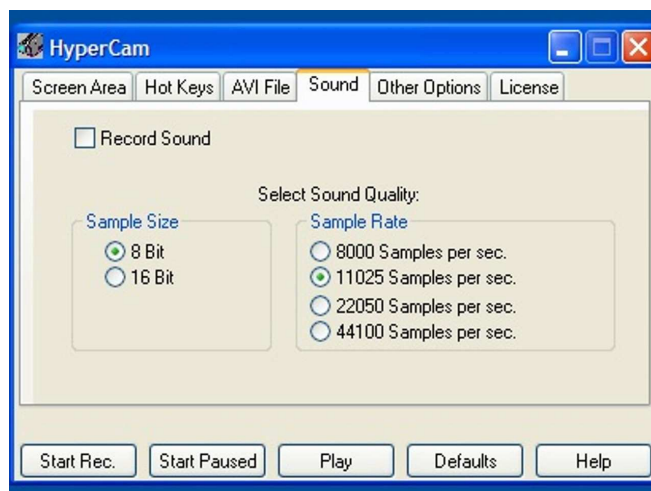
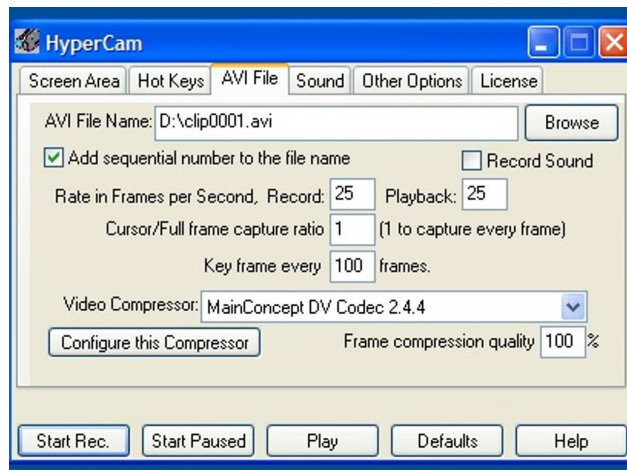


# 3D Vlucht animatie met NASA World Wind en Hypercam volgens 3POINT.

1. Download NASA World Wind van [www.worldwind.arc.nasa.gov](http://www.worldwind.arc.nasa.gov) (170MB) en installeer.
2. Download Hypercam 2.11.00 van [www.hyperionics.com](http://www.hyperionics.com) (0.9MB) en installeer (crack op keygen.us)
3. Download Mainconcept DV codec 2.4.16 van [www.mainconcept.com](http://www.mainconcept.com) (6MB) en installeer (crack op keygen.us)
4. Maak schermresolutie 800x600
5. Start Hypercam en maak volgende instellingen:





6. Start NASA World Wind.
7. Zoom in op de plek die je wilt capturen, wacht even totdat World Wind alle informatie heeft gedownload.
8. Start de screencapture door de Start Rec. Knop te klikken en maak vervolgens in World Wind het scherm "Full View" (ALT-ENTER)
9. Maak een 3D vlucht, zie handleiding nevenstaand. Dit verlangt enige oefening.
10. Druk F2 om de capture te stoppen, als alles goed gegaan is zijn er geen "lost frames"
11. De clip0001.avi kan zo in Studio9 geïmporteerd worden.

## View angle & rotate

Right drag-click



W  
A S D

Viewing angle reveals details in elevation. Rotating a view changes the heading in any direction.

## View panning

Single left click or Left drag-click



U  
H J K  
← →

Rotates the world while focusing at the center of the Earth.

## Zoom

Both buttons drag-click or Mouse Wheel



7  
1

Zooming reveals greater detail of the surface. Note: The amount of detail is limited by the loaded dataset.

## Reset view

S



Reset view will change your view back to an overhead perspective. Pressing reset twice will zoom the world back to a default view.

## Elevation

Terrain elevation can be adjusted by pressing any number key from "1-9".

Pressing "0" will flatten the terrain.

World Wind lets you zoom from satellite altitude into any place on Earth, leveraging Landsat satellite imagery and Shuttle Radar Topography Mission elevation data. World Wind lets you experience Earth terrain in visually rich 3D, just as if you were really there.



### F10



**Position Information**  
Displays latitude, longitude, heading, altitude, and terrain elevation at the crosshairs.

### F7



**Latitude & Longitude**  
Displays latitude & longitude lines dynamically on the Earth.

### F6



**Placename Search**  
Searches a local database of over 4 million names of public buildings, cities, and countries.

### F2



**Rapid Fire MODIS**  
MODIS satellite imagery for fires, floods, dust, smoke, and storms updated almost daily.

### F1



**Scientific Visualization Studio**  
The SVS produces animations of scientific data on a local and global scale.

### Country and U.S. State Borders



Draws country boundaries and U.S. State boundaries.

### Placenames



Labels public buildings, cities, counties and countries based on your level of zoom.

### Astrobiology



Marks several hotspots of activity of particular interest to Astrobiology.

### Flags of the World



Displays flag for every country across the globe based on data from The CIA World Fact Book.

### Ancient & Modern Landmarks



Marks dozens of landmarks across the world with links to Wikipedia.

### Note for features with a ★



These have links to web sites. Click on the icons for more information.

### LandSat7 Visible Color @ NASA LT



This high resolution data set has full enhanced color imagery for the entire globe.

### LandSat7 Visible Color @ WWC



The open source community hosts an archive of Landsat imagery built from NASA data.

### LandSat7 Pseudo Color @ WWC



The open source community hosts an archive of Landsat imagery built from NASA data.

### USGS 1m b/w Ortho @ Terraserver



A USGS archive of very high resolution aerial photography that covers the U.S. only.

### USGS Topo Maps @ Terraserver



A USGS archive of high resolution topographic maps that covers the U.S. only.

### USGS Urban area @ Terraserver



A USGS archive of very high resolution aerial photography in color for select U.S. cities.

### Position Information



Displays latitude, longitude, heading, altitude, and terrain elevation at the crosshairs.

### Latitude & Longitude



Displays latitude & longitude lines dynamically on the Earth.

### Placename Search



Searches a local database of over 4 million names of public buildings, cities, and countries.

### F2



MODIS satellite imagery for fires, floods, dust, smoke, and storms updated almost daily.

### Web Map Server



WMS allows World Wind to browse any WMS server archive and their contents.

### F1



The SVS produces animations of scientific data on a local and global scale.

### Country and U.S. State Borders



Draws country boundaries and U.S. State boundaries.

### Placenames



Labels public buildings, cities, counties and countries based on your level of zoom.

### Astrobiology



Marks several hotspots of activity of particular interest to Astrobiology.

### Flags of the World



Displays flag for every country across the globe based on data from The CIA World Fact Book.

### Ancient & Modern Landmarks



Marks dozens of landmarks across the world with links to Wikipedia.

### Note for features with a ★



These have links to web sites. Click on the icons for more information.